



NSF I/UCRC FOR SPATIOTEMPORAL THINKING, COMPUTING, AND APPLICATIONS



The I/UCRC for Spatiotemporal Thinking, Computing and Applications (a.k.a. NSF Spatiotemporal Innovation Center) holds its 19th semi-annual Industrial Advisory Board meeting on June 7th-8th, 2023. The meeting is scheduled to take place primarily in person, with hybrid accommodations to accommodate remote participants. This meeting reviews the center's innovative research and identifies new projects to be supported through collaborations among academia, industry, and agencies. All center research results are freely shared among members to boost their products, services, and businesses. All companies or agencies (with interest in geospatial and spatiotemporal research themes) are welcome to participate. This is a prime time to become familiar with cutting-edge research results, leverage the innovative outcome for your future products and services, increase your efficiency, improve your competitiveness, and boost your business.

Please register by the following link:

https://docs.google.com/forms/d/1iBpJth0mSytHfWxnc8l9gO4KPKYaPx0xgSqpk1GXzmU/viewform?edit_requested=true

What is an Industry/University Cooperative Research Center (I/UCRC)?

Initiated by Congress in 1973, the National Science Foundation (NSF) Industry/University Cooperative Research Center (I/UCRC) Program funds promising technologies created by university scientists and transfers the research results to companies and organizations where the results can be applied to benefit society and enhance business. An I/UCRC consists of the funded university sites and members from industry, state and federal government agencies, and non-government organizations (NGOs) by collaborating on precompetitive research. Members contribute the annual membership fee to an I/UCRC site. Through membership, the industry and the university form a close partnership that

Contacts

For memberships:

GMU Site: Chaowei Yang, GMU, cyang3@gmu.edu

Harvard Site: Wendy Guan, Harvard, wguan@cga.harvard.edu

For logistics: stc@gmu.edu



nurtures a pool of scientists and engineers to develop new capabilities for emerging domains.

What is I/UCRC for Spatiotemporal Thinking, Computing, and Applications?

Many 21st century challenges in our contemporary society, such as natural disasters, happen in both space and time, requiring that spatiotemporal principles being incorporated into the computing process. A systematic investigation of these principles can advance human knowledge by providing trailblazing methodologies to explore the next generation of computing for addressing these challenges. On September 15, 2013, the NSF I/UCRC renewed the I/UCRC for Spatiotemporal Thinking, Computing, and Applications (STC) for a second phase for George Mason University (GMU) and Harvard University (Harvard) to develop potential solutions to address these 21st- century challenges. The collaborating universities collaboratively aim at building up the national and international spatiotemporal infrastructure.

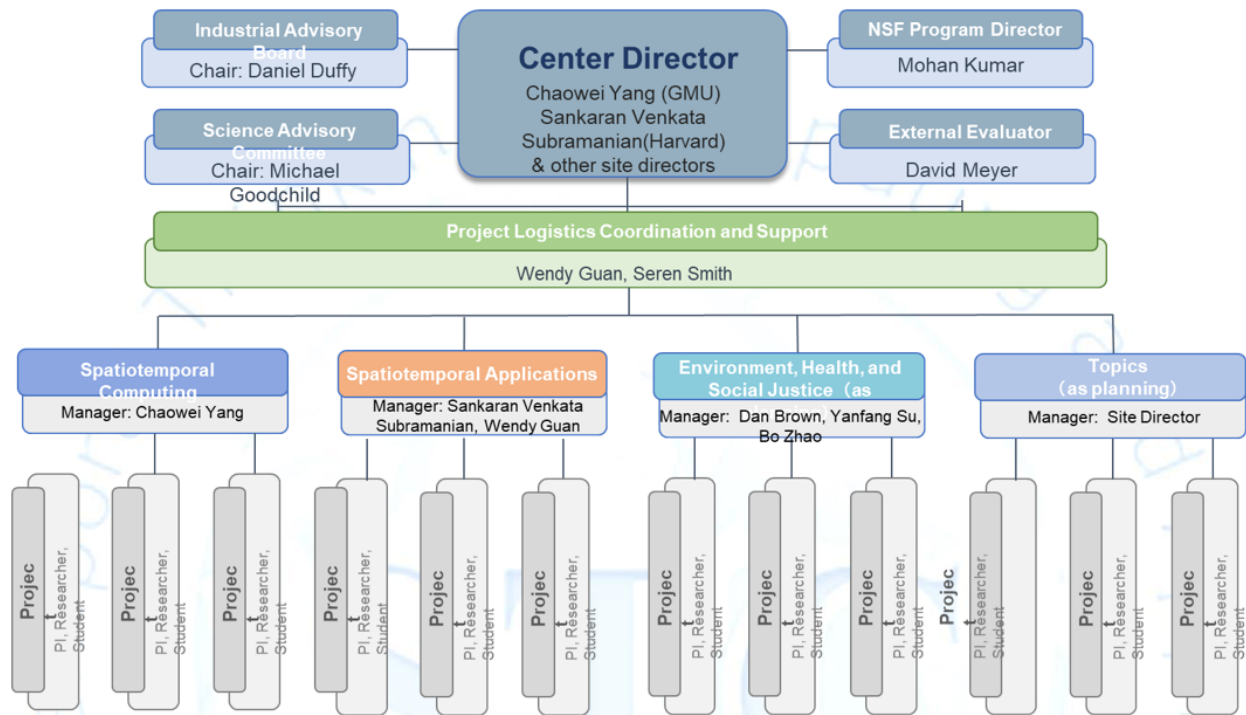
The relevant domains where STC conduct research include, but are not limited to: GISciences, computing sciences, location-based services, transportation, Earth sciences, environmental sciences, space sciences, public health, geological sciences, spatial data infrastructure, biological sciences, and social sciences.

STC operates under the auspices, rules, and standard operating procedures of the NSF I/UCRC program. The operations are managed by universities under the guidance of an Industry Advisory Board (IAB), which comprises representatives from every member organization. Each year (research) faculty propose projects to meet the needs outlined by IAB. The IAB then vote to fund projects. The academia researchers work closely with and report to industrial members to ensure the project deliverables and close relevance.

Contacts

For memberships:
GMU Site: Chaowei Yang, GMU, cyang3@gmu.edu
Harvard Site: Wendy Guan, Harvard, wguan@cga.harvard.edu

For logistics: stc@gmu.edu



How would you benefit as a Member of STC?

STC conducts low cost, low risk precompetitive research for its members in industry, government agencies, and NGOs. As a member of the IAB, you will assess ongoing research and set priorities for new research directions, and your organization will benefit from center innovations. Specifically, the benefits as a member include:

1. Gain full access to R&D results of all sites collaborating with all members, which far exceeds what can be achieved by one organization's internal resource (such as staff and funding).
2. Increase the competitiveness and the service or product capabilities of companies, organizations, and agencies through deliverable-oriented

Contacts

For memberships:
 GMU Site: Chaowei Yang, GMU, cyang3@gmu.edu
 Harvard Site: Wendy Guan, Harvard, wguan@cga.harvard.edu

For logistics: stc@gmu.edu



collaboration with academia. 3. Recruit and attract outstanding students by engaging and collaborating with them through project lifecycles.

Current IAB Members

- ◆ OmniSci.Inc
- ◆ NASA Center for Climate Simulations (NCCS)
- ◆ NASA Goddard CISTO
- ◆ National Oceanic and Atmospheric Administration (NOAA)
 - JPSS
 - GOES-R
 - Disaster Management
 - Operations
- ◆ U.S. Department of State
- ◆ China Data Institute at Michigan, Ann Arbor
- ◆ Knime
- ◆ Future Data Lab
- ◆ NASA – Advanced Information Systems Technologies (AIST)

Past IAB Members

- ◆ The Federal Geographic Data Committee
- ◆ Harris Corporation
- ◆ Microsoft
- ◆ United Nations (UN)
- ◆ East View Geospatial
- ◆ National Geomatics Center of China
- ◆ USGS
- ◆ RMDS, Inc.
- ◆ Northrop Grumman Corporation
- ◆ National Geospatial-Intelligence Agency (NGA)
- ◆ Shaanxi Administration of Surveying, Mapping and Geoinformation
- ◆ Zhe Jiang Surveying, Mapping and Geoinformation (ZJSG)

Contacts

For memberships:
GMU Site: Chaowei Yang, GMU, cyang3@gmu.edu
Harvard Site: Wendy Guan, Harvard, wguan@cga.harvard.edu

For logistics: stc@gmu.edu



Online Meeting Resources:

Center Website: <https://www.stcenter.net/>

IAB agenda: https://www.stcenter.net/?page_id=3853

Contacts

For memberships:

GMU Site: Chaowei Yang, GMU, cyang3@gmu.edu

Harvard Site: Wendy Guan, Harvard, wguan@cga.harvard.edu

For logistics: stc@gmu.edu

