



## February 2022 Monthly Newsletter

Edited by Seren Smith & Leslie Hunt

Content provided by Phil Yang, Wendy Guan, Leslie Hunt, Shyra LaGarde

Designed Yun Li, Ziyue Xu, & Seren Smith

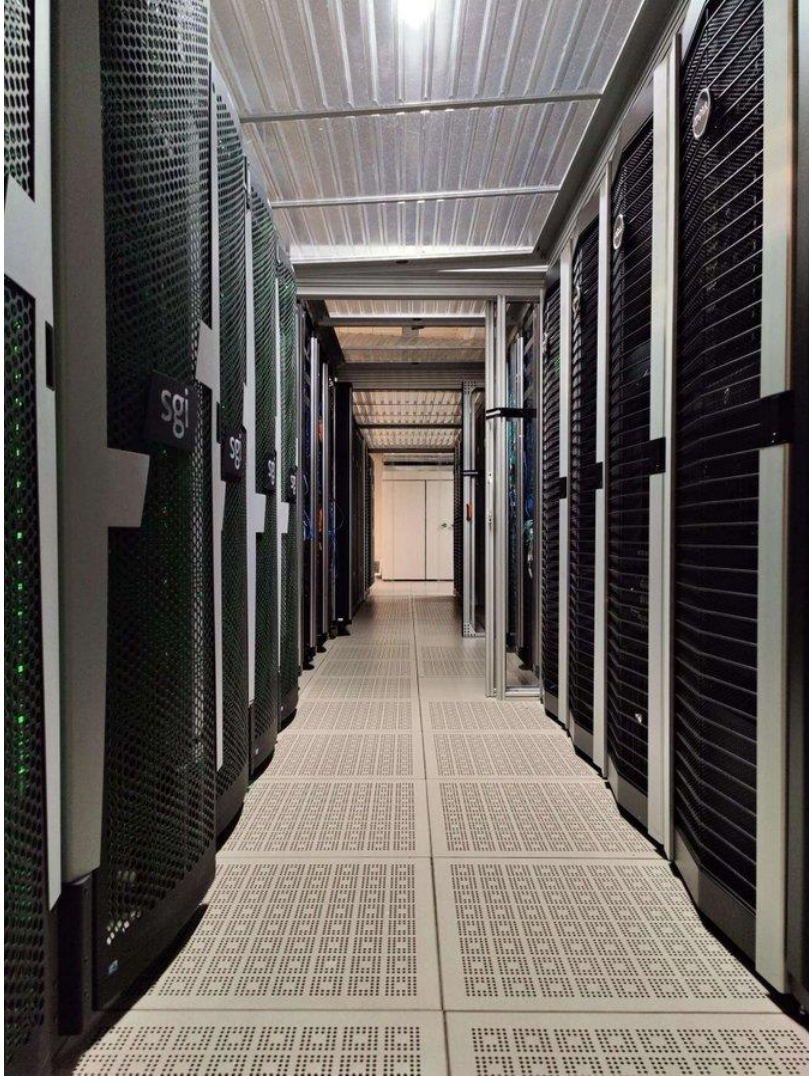
February 28th, 2022

### KNIME – New Member to STC

STC's Industry Advisory Board (IAB) welcomes [KNIME](#) as a new member in February 2022. KNIME is an international company with offices in Zurich, Berlin, Konstanz, Austin, and online. Its KNIME Analytics Platform, an open-source software for creating data science, is intuitive, open, and continuously integrating new developments, making understanding data and designing data science workflows and reusable components accessible to everyone. KNIME has begun supporting the HVD-21-07 project on **Developing Workbenches for Spatial Data Science** at Harvard's Center for Geographic Analysis.

### STC Cloud Platform

The STC Cloud Platform is now up and is a great resource for benefiting STC-related research. The cloud service has clusters with 600 nodes, transferred from NASA Center for Climate Simulations of NASA Goddard CISTO, designed servers that can be accessed over the internet, and advantages of the cloud which include larger storage, faster computing, easier management, and helping reduce cost. [Read more.](#)



## START Student Byron Pritchett Transfers to Georgia Tech

Byron Pritchett, a mentee for the START program, recently transferred from a two-year program at Valdosta State University to enter a four-year program at Georgia Tech. Byron was a valuable asset to the George Mason University site, and has commented, "This internship really helped prepare me for future endeavors in my career."

We wish him the best of luck in his future career objectives.